




Hybrid 3D Printing Solutions

print-hive.com

Material catalogue – 2025-01-15

 contact@print-hive.com

 www.print-hive.com

 2, impasse le Dreuzin
35530 Servon-sur-Vilaine

Contents

1 Mechanical engineering	3
2 Electronics engineering	7
3 Special applications	9
4 Prototyping and aesthetics appearance	10
Acronyms	14

Disclaimer

This document shows the common references that have been qualified by Uboe and are still offered as printing material for new projects.

While this document attempts to be as exhaustive as possible, unreferenced filaments can however be selected. We can support you in the selection of equivalence in our references or we can work with our suppliers for corresponding references.

For any specific needs or questions, please contact us at:

contact@print-hive.com

The company reserves the right to select references according to the availability and inventory from our suppliers and also material matching.

1 Mechanical engineering

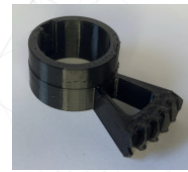
This table lists the filaments currently available with applications in mechanical engineering, such as gears, supports, consumables, wear parts, etc.

Materials such as *PA Food* are doped with metal particles to be easily discriminated by metal detectors in addition to their blue color, and doped materials such as *PA RAIL* and *ABS AF (aramid fiber)* have greater mechanical properties than their basic references.

Material	Reference Number	Color / PMS code	Price range		
	PETG	#0078	Transition / 807 C	€	
	PETG	#0079	Dark olive / Black 4 C	€	
	PETG	#0012	Native / 663 C	€	
	HIPS	#0073	White / 7436 C	€	
	ASA	#0001	Black / Black 6 C	€	
	ASA	#0061	Sand yellow / 3935 C	€	
	PETG	#0036	Brownish purple / 697 C	€€	
	PETG	#0037	White / 7436 C	€€	

continued on next page

Material	Reference Number	Color / PMS code	Price range
	PETG #0049	Black / Black 6 C	€€
	PETG #0050	Deep orange / 166 C	€€
	PETG #0060	White / 7436 C	€€
	PCTG #0076	White / 7436 C	€€
	ASA #0074	Black / Black 6 C	€€
	PETG ANTI-UV #0077	White / 7436 C	€€
	PP #0081	Ecu / 7499 C	€€
	TPC #0087	White / 7436 C	€€
	PA Food #0006	Muted blue / 2150 C	€€
	SEBS #0083	Dark / 276 C	€€






continued on next page

	Material	Reference Number	Color / PMS code	Price range	
	PETG GF UV	#0011	White / 7436 C	€€	
	TPU 98A	#0056	Black / Black 6 C	€€	
	TPU 98A	#0057	Grey / Cool Gray 7 C	€€	
	TPU	#0085	Silver / Cool Gray 3 C	€€	
	CPE HT	#0069	Native / 663 C	€€	
	PP	#0082	Light grey / Cool Gray 1 C	€€	
	ABS AF	#0004	Black / Black 6 C	€€	
	PETG PTFE	#0068	White / 7436 C	€€	
	PC PTFE	#0008	White / 7436 C	€€€	

continued on next page

1 Mechanical engineering

Material	Reference Number	Color / PMS code	Price range
 NYLON PA12 CARBONE	#0075	Black / Black 6 C	€€€
 PEBA	#0086	Ecru / 7499 C	€€€
 PA6	#0072	Black / Black 6 C	€€€




Table 1 – Mechanical engineering

2 Electronics engineering

This table lists filaments currently available with applications in electronic engineering, such as housings, substrates (PCBs), shielding, etc.

Materials such as *PETG ESD* and *PETG GF UV* are preferred to protect electronic devices against electrostatic discharges.

The *PETG GF UV* adds protection against ultraviolet radiation.

The *PC PTFE* is preferred for radiofrequency applications.

Material	Reference Number	Color / PMS code	Price range		
	HIPS	#0073	White / 7436 C	€	
	PETG GF UV	#0011	White / 7436 C	€€	
	TPU 98A	#0056	Black / Black 6 C	€€	
	TPU 98A	#0057	Grey / Cool Gray 7 C	€€	
	TPU	#0085	Silver / Cool Gray 3 C	€€	
	PLA DIAMOND	#0084	Ecru / 7499 C	€€	
	PETG ESD	#0005	Silver / 7534 C	€€	


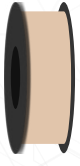




continued on next page

Material	Reference Number	Color / PMS code	Price range	
	PETG PTFE #0068	White / 7436 C	€€	
	PC PTFE #0008	White / 7436 C	€€€	
	TPC ESD #0080	Ecru / 7499 C	€€€	
	ABS ESD #0071	Black / Black 6 C	€€€	

Table 2 – Electronics engineering

3 Special applications

This table lists filaments currently available with special applications, such as food contact, bactericidal or virucidal objects, flexible objects, etc.

Material	Reference Number	Color / PMS code	Price range
 TPC	#0087	White / 7436 C	€€
 TPE 22D	#0013	Native / 4685 C	€€
 TPU 70D	#0009	Native / 705 C	€€
 PLA Virucid	#0010	Bright teal / 2239 C	€€
 SEBS	#0083	Dark / 276 C	€€
 PEBA	#0086	Ecrú / 7499 C	€€€

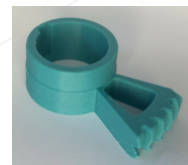
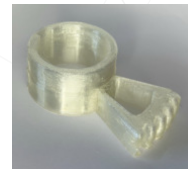
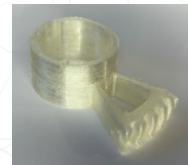


Table 3 – Special applications

4 Prototyping and aesthetics appearance

This table identifies the filaments currently available with applications in prototyping, exhibition (or decorative) or other non-durable applications that do not require improved performance from a mechanical or electronic point of view.

Material	Reference Number	Color / PMS code	Price range		
	PLA	#0046	Transition / 2587 C	€	
	PLA	#0039	Dark cream / Yellow 0131 C	€	
	PLA	#0040	Sunflower / 7408 C	€	
	PLA	#0041	Very light brown / 727 C	€	
	PLA	#0042	White / 7436 C	€	
	PLA	#0043	Dark / 419 C	€	
	PLA	#0044	Dark blue grey / 534 C	€	
	PLA	#0045	Marble / Cool Gray 1 C	€	

continued on next page

4 Prototyping and aesthetics appearance

	Material	Reference Number	Color / PMS code	Price range	
	PLA	#0051	Mid blue / 2133 C	€	
	PLA	#0053	Russet / 1535 C	€	
	PLA	#0054	Dark / 276 C	€	
	PLA	#0055	Teal green / 2417 C	€	
	PLA	#0003	Black / Black 6 C	€	
	PLA Silk	#0047	Gold / 132 C	€	
	PLA Silk	#0048	Rose red / 1935 C	€	
	PLA	#0035	Light grey blue / 7681 C	€	
	PLA	#0023	Native / 7499 C	€	
	PLA	#0062	Mid blue / 2133 C	€	

continued on next page

4 Prototyping and aesthetics appearance

Material	Reference Number	Color / PMS code	Price range	
	PLA	#0063	Dark olive / Black 4 C	€
	PLA	#0064	Native / 7499 C	€
	PLA	#0065	Blueberry / 7664 C	€
	PLA	#0066	White / 7436 C	€
	PLA	#0038	White / 7436 C	€
	PLA+	#0002	Black / Black 6 C	€
	PLA+	#0014	Deep sky blue / 2382 C	€€
	PLA+	#0015	Bright yellow / 803 C	€€
	PLA+	#0016	Orangish / 164 C	€€
	PLA+	#0017	Light red / Warm Red C	€€



continued on next page

4 Prototyping and aesthetics appearance

Material	Reference Number	Color / PMS code	Price range		
	PLA	#0018	Native / 705 C	€€	
	PLA Silk	#0031	Gold / 132 C	€€	
	PLA	#0027	Racing green / 2427 C	€€	
	PLA	#0028	Fire engine red / 2347 C	€€	
	PLA	#0026	Pale pink / 2036 C	€€	
	PLA	#0033	Royal blue / Blue 072 C	€€	
	PLA Silk	#0019	Transition / 807 C	€€	
	PLA Wood	#0024	Light brown / 729 C	€€	

Table 4 – Prototyping and decorative

Acronymes

- ABS** Acrylonitrile Butadiene Styrene. 5, 8
- AF** Aramid Fiber. 5
- ASA** Acrylonitrile Styrene Acrylate. 3, 4
- CPE** Copolyester. 5
- DIAMOND** Containing 4-6 nm spherical diamond particles. 7
- ESD** Electrostatic Discharge. 7, 8
- GF** Glass Fiber. 5, 7
- HIPS** High Impact Polystyrene. 3, 7
- HT** High Temperature. 5
- PA** Polyamide. 4, 6
- PC** Polycarbonate. 5, 8
- PCTG** Polycyclohexylenedimethylene Terephthalate Glycol. 4
- PEBA** Polyether Block Amide. 6, 9
- PETG** Polyethylene Terephthalate Glycol. 3, 4, 5, 7, 8
- PLA** Polylactic Acid. 7, 9, 10, 11, 12, 13
- PP** Polypropylene. 4, 5
- PTFE** Polytetrafluoroethylene. 5, 8
- SEBS** Styrene Ethylene Butylene Styrene. 4, 9
- TPC** Thermoplastic Copolyester. 4, 8, 9
- TPE** Thermoplastic Elastomer. 9
- TPU** Thermoplastic Polyurethane. 5, 7, 9
- UV** Ultraviolet. 5, 7